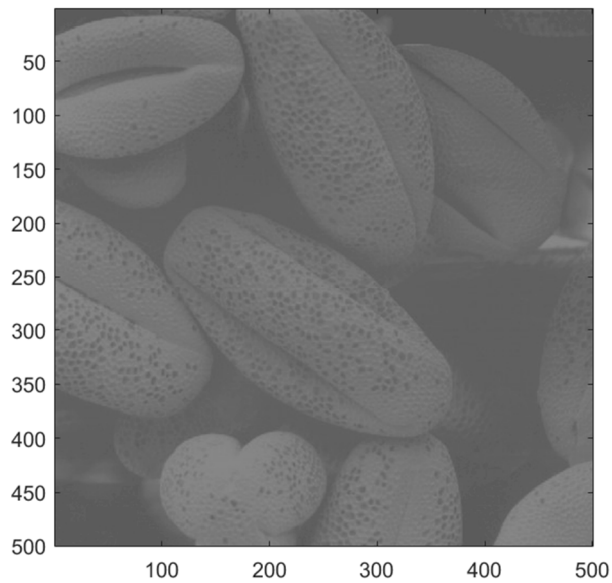


```
clear all
```

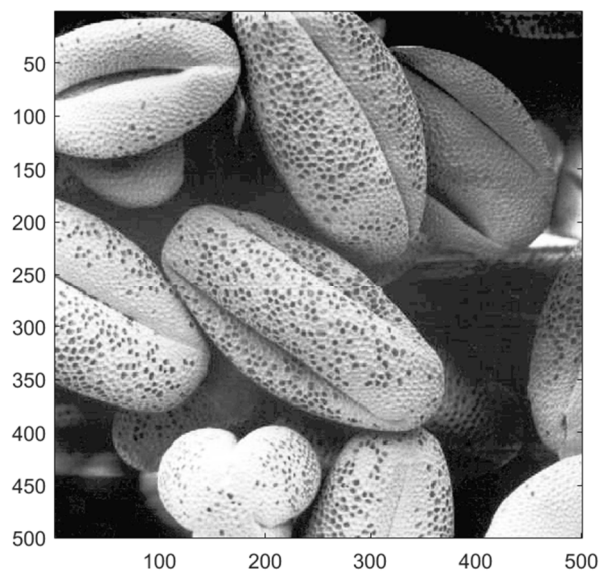
```
X = imread( 'pollen.jpg' );  
whos
```

Name	Size	Bytes	Class	Attributes
X	500x500	250000	uint8	

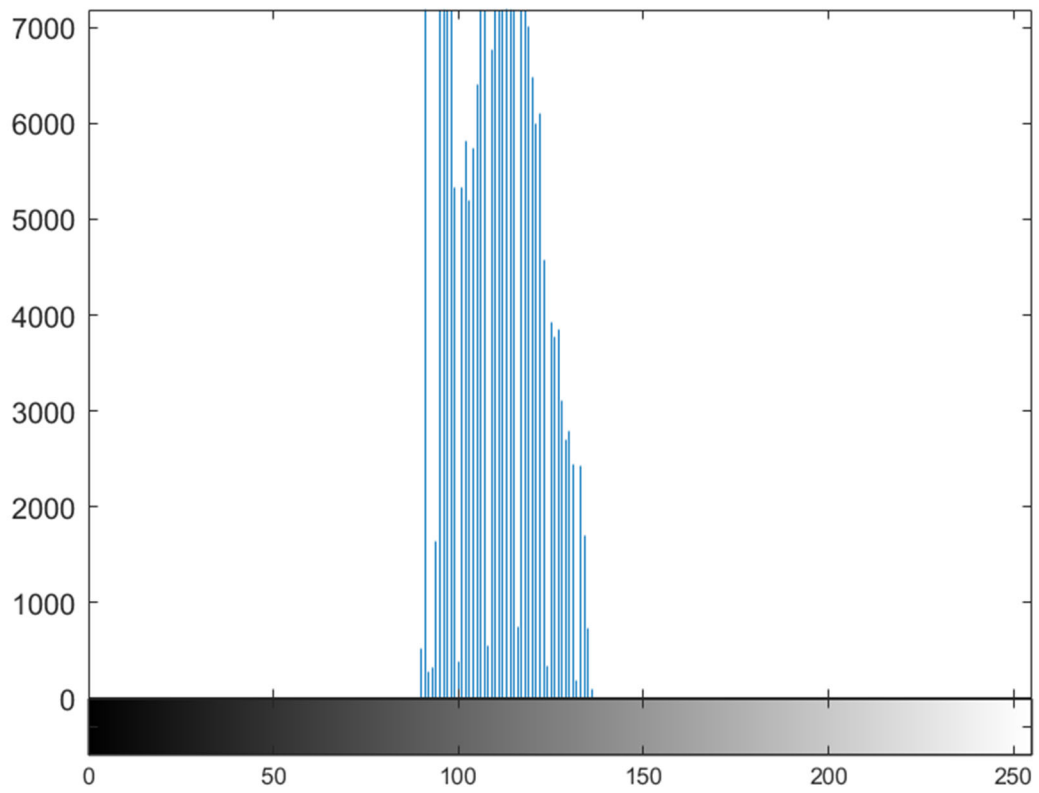
```
[Y,T] = histeq(X,256);  
T = T*255;  
image( X )  
colormap( gray ( 256 ) )  
axis image
```



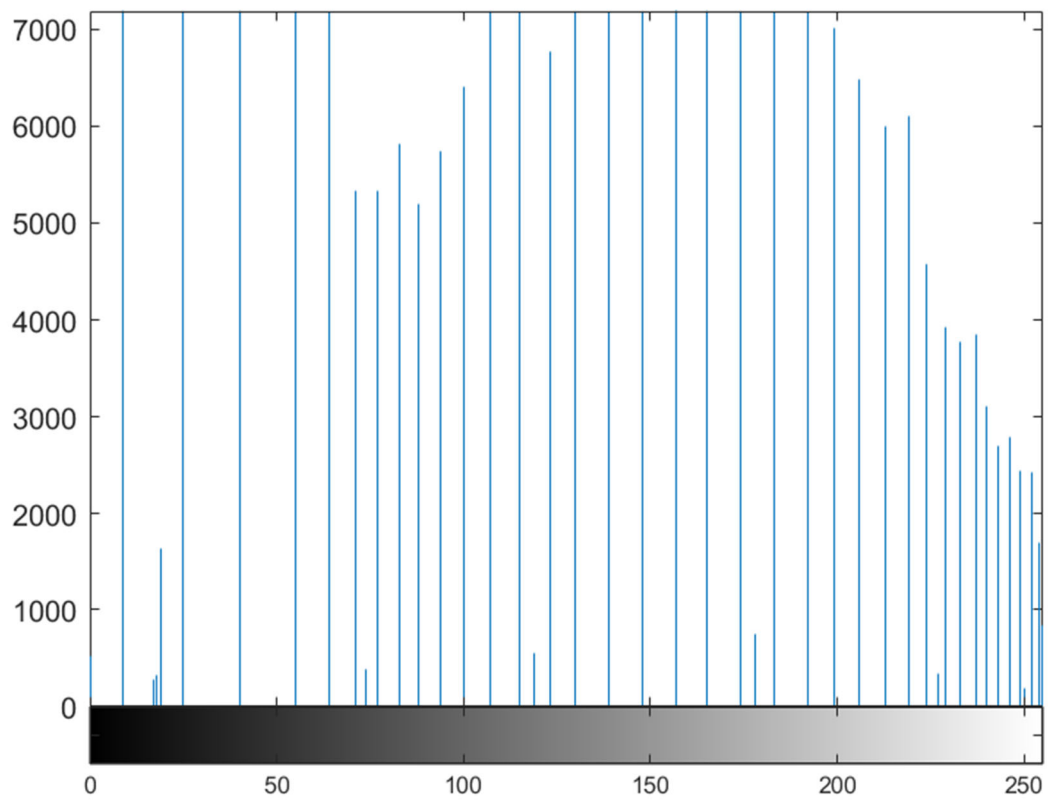
```
imagesc( Y )  
colormap( gray ( 256 ) )  
axis image
```



```
imhist(X)
```



```
imhist(Y)
```



```
plot(T, 'LineWidth', 3)
```

```
axis([0 255 0 255])
```

